



GYPSEMNA



Presentation Contents



01. About the company.



02. Strategic Partners.



03. Certificates & Approvals.



04. Products & Systems.



05. Gypsemna services.



06. Some of Our major Projects.



07. **10 reasons** to choose Gypsemna.



-Gypsemna was established in **2006**
-One of the LARGEST factories in the region

Total Factory Area:	302,000 m²
Built up Area:	46,662 m²
Warehouse Area:	6,000 m²
Production Capacity:	50million m²/Annum or 6200m²/hr
Plaster plant speed:	90m/min
Warehouse Capacity:	2 million m² of plasterboards
Major Equipment Supplier:	GRENZEBACH BSH GmbH(Germany)



GYPSEMNA

Our Factory is located in UAE's capital city, Mussafah (ICAD- 2) Abu Dhabi
Strategic **Location of Gypsemna** – Proximity to Gypsum Source, Reduced transportation. Availability of cheap Energy.



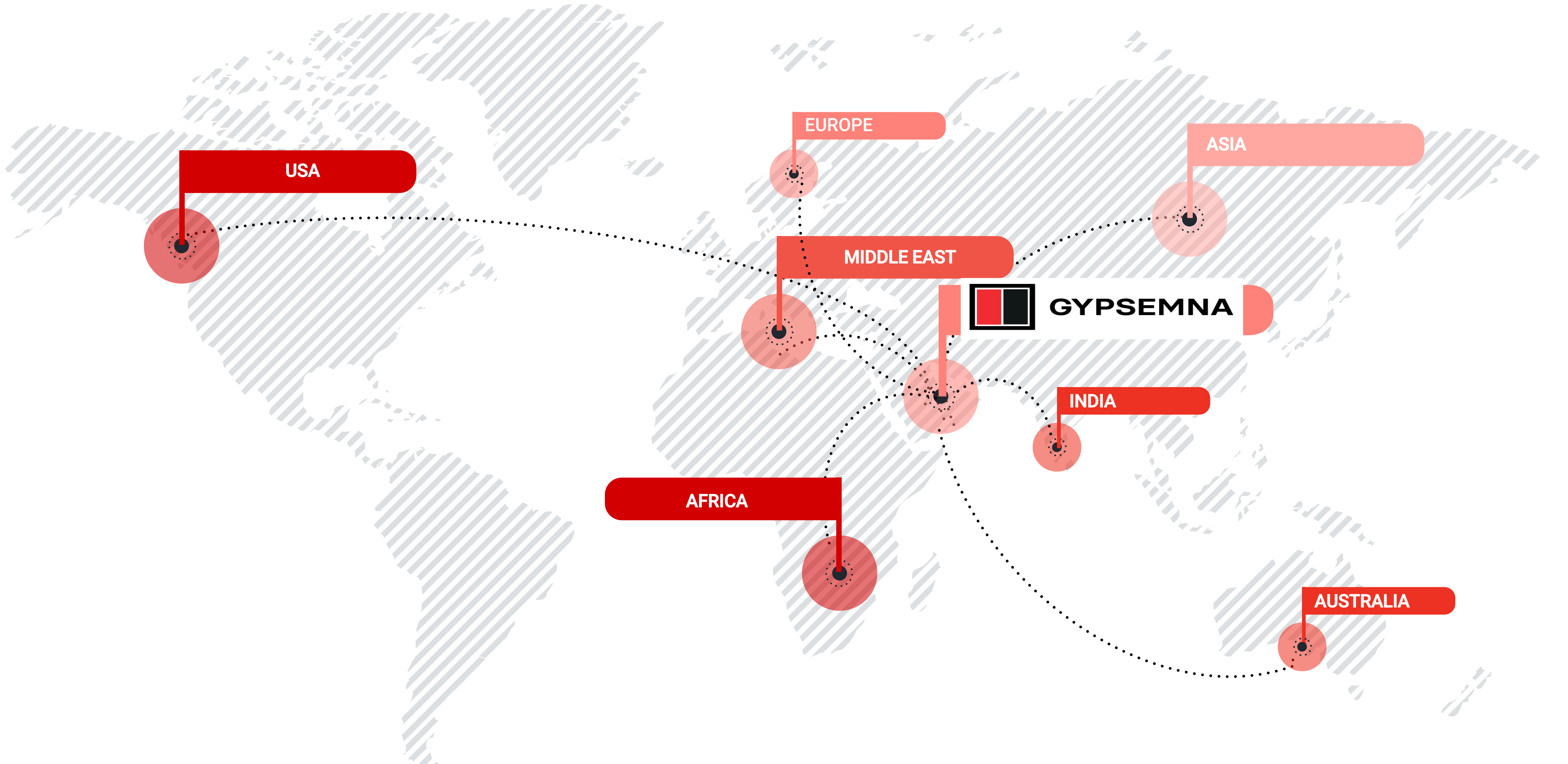
Factory Location

Gypsemna

Business

Model Includes :

- 1-Distribution in UAE.
- 2-Projects in UAE and Global.
- 3-Export from UAE to the world.



Gypsemna Systems

Due to the market requirements, we swiftly expanded our product line to include not only the Gypsum Plasterboards, but also the provision of **COMPLETE DRYWALL SYSTEM.**



01

Cinema System



04

Shaft wall System



02

Partition System



05

Liner System



03

Ceiling System



06

Special System

Our Gypsum plasterboards

Products



Regular (RG)



Moisture Resistant (MR)



Fire Wall (FW)



Moisture Resistant & Fire Wall (MRFW)



Moisture Resistant & Fire Wall Core Board (MRFW-CB)



Tuff (TF)



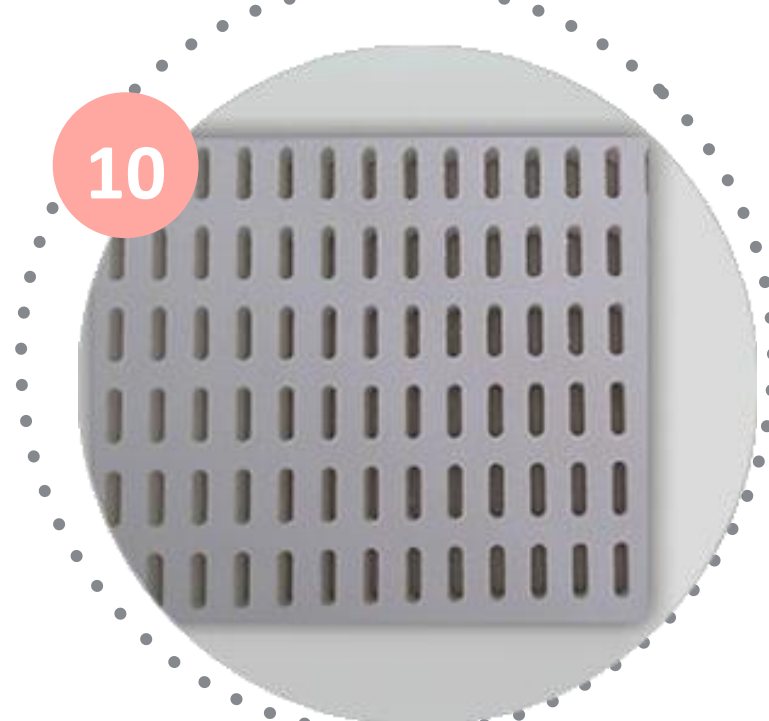
Glass Mat (GM)



Mold & Moisture Resistant (MMR)



Tuff Mold & Moisture Resistant (TMMR)



Perforated Boards & Tiles

-ASTM International (American Society for Testing and Materials) 1396.
-EN (European) Standard .

Our **Gypsum plasterboards**

Products



Regular (RG)

Description:

Gypsemna's Regular Gypsum Plasterboard is made up of a non-combustible and mechanically stable aerated gypsum core, which is encased in heavy duty Kraft paper liner on either side. It can be fixed to timber, metal framing and masonry works for ceilings, partitions and wall linings, providing a high quality and economical finish to interior projects.

Board Color:

Face color is Ivory & Reverse color is Brown

Thickness (mm): 7, 7.5, 8, 9, 9.5, 12, 12.5, 15, 16, 18

Edge Profile: TE, SE

Width (mm): 900, 1200 & 1220

Length (mm): 1800 - 3000

Product Standard:

ASTM C1396/C1396M

EN 520 Type A (DIN18180/BS1230 Part 1, Type 1)

Advantage:

Suitable for wide range of decorative finishes

Light in weight and easy to install

Suitable for internal constructions of partitions and ceilings

Provides fire protection, sound insulation and thermal insulation

Our **Gypsum plasterboards**

Products



Moisture Resistant (MR)

Description:

Gypsemna's Moisture Resistant Gypsum Plasterboards have the inherent properties of regular plasterboards as well as accrued moisture resistance. The property is due to the specific additives such as water repellent agents in the non-combustible, mechanically stable aerated gypsum core. This core is encased in heavy duty Kraft paper liner on either side of the board. These boards inhibit moisture absorption in the gypsum core when used for lining interior walls and ceilings, which may be exposed to a high degree of moisture.

Board Color:

Front color is Green & Reverse color is Green.

Product Standard:

ASTM C1396/C1396M

EN 520 Type A and H1 (DIN 18180/BS 1230 Part 1, Type 3)

Thickness (mm): 8, 9, 9.5, 12, 12.5, 15, 16, 18

Edge Profile: TE, SE

Width (mm): 900, 1200 & 1220

Length (mm): 1800 – 3000

Advantage:

Suitable for wet area application such as bathrooms, washrooms, kitchens etc.

Light in weight and easy to install

Offers superior moisture resistance

Water resistant for short periods of wet exposure until covered with water resistant paint or ceramic tiles

Similar to the Regular Board for the fire rating or sound insulation

Our Gypsum plasterboards

Products



Fire Wall (FW)

Gypsemna's Fire Wall Gypsum Plasterboards consist of gypsum core mixed with glass fiber chopped strands and fire resistant expansion additives, firmly bonded to heavy duty Kraft paper liner on either side, increasing its strength and providing fire resistance property. The addition of glass fibre and fire-resistant additives in the gypsum core improves the cohesive properties and significantly enhances the fire integrity performance when compared to that of the Regular gypsum plasterboards.

Board Color:

Front color is Pink & Reverse color is Pink.

Product Standard:

ASTM C1396/C1396 M Type X

EN 520 Type I, F (DIN 18180/BS 1230 Part 1, Type 5)

Advantage:

Provides greater fire resistance and sound insulation compared to that of a Regular gypsum plasterboards

Light in weight and easy to install

Can be used as lining to contribute to the fire resistance and sound insulation of various building elements

Thickness (mm): 8, 9, 9.5, 12, 12.5, 15, 16, 18

Edge Profile: TE, SE

Width (mm): 900, 1200 & 1220

Length (mm): 1800 - 3000

Our **Gypsum plasterboards**

Products



Tuff(TF)

Description:

Gypsemna's Tuff Gypsum Plasterboards are made up of non-combustible, mechanically stable and fire retarding **high density gypsum core**, encased in very heavy duty Kraft paper liner on either side. This special purpose gypsum plasterboard is designed for use in walls or partitions that require **superior impact strength**, breaking strength, fire resistance and sound insulation properties, when compared to all other types of gypsum plasterboards. This is used for internal applications.

Board Color:

Face color is Yellow & Reverse color is Yellow.

Product Standard:

ASTM C1396/C 1396 M Type X

EN 520 Type D, F, I and R (DIN 18180/BS 1230 Part 1, Type 5) .Fire rating 45 to 120 min . Acoustic : 41 to 58 dB.

Advantage:

Developed for **high impact resistance partitions**

Suitable for use in areas subject to crowd pressure and impact damage

Offers a very good fire resistance and sound insulation properties

Ready to take variety of decorative finishes

Light weight and easy to install

Thickness (mm): 12, 15, 16

Edge Profile: TE, SE

Width (mm): 900, 1200 & 1220

Length (mm): 1800 - 3000

Our **Gypsum plasterboards**

Products



Glass Mat(GM)

Description:

Gypsemna's Glass Mat Gypsum Plasterboards are a specially developed product for **external applications**. These boards are **moisture resistant, water resistant and fire resistant** due to the special additives in the gypsum core, that is sandwiched between the glass mat liner on both sides.

Board Color:

Face color is Blue & Reverse color is Grey.

Product Standard:

ASTM C 1177/ C 1177 M Type X

EN 15283 Part 1 .Fire rating 60 to 180 min . Acoustic : 40 to 58 dB.

Advantage:

Offers superior strength, outstanding resistance to environmental damage and excellent bonding surface for EIFS

Enhanced Mold and Mildew resistance

Ready to take variety of decorative finishes

Light weight and easy to install

Suitable for external use with suitable rendering

Offers extremely good fire resistance and sound insulation properties

Thickness (mm): 13, 16

Edge Profile: SE

Width (mm): 1200 - 1219

Length (mm): 1800 - 3000

Metal Profiles



01 Deflection Head Track



02 U Track



03 C Stud



04 Quiet Stud



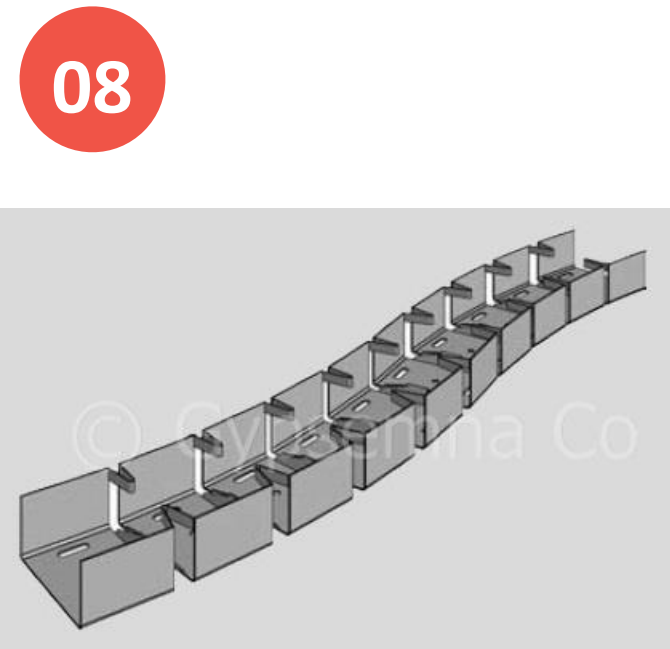
05 Noggin Track



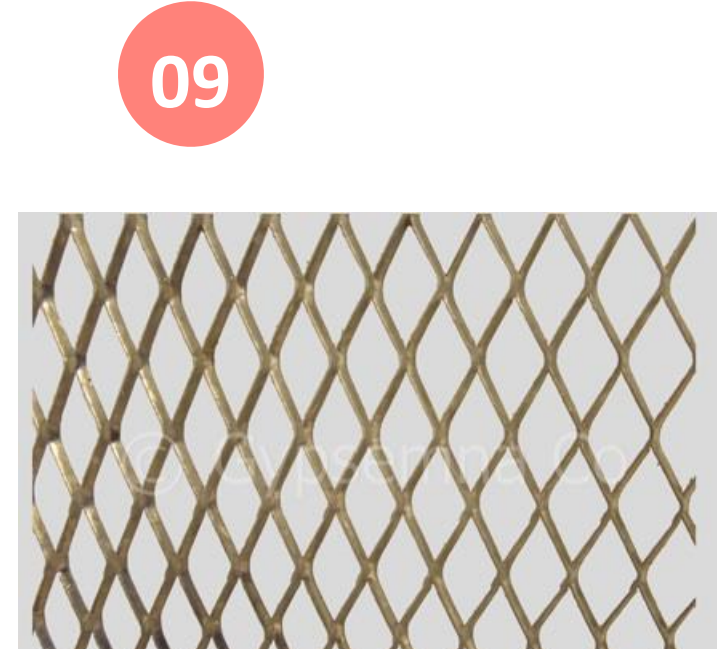
06 Fixing Channel



07 Resilient Furring Channel



08 Flexible Track



09 Expanded Metal Mesh



10 L Angle



11 J Runner- DHT



12 J Runner Wall Track



13 CH Stud



14 E Stud



15 ZZ Purlins



16 Top Cross Rail



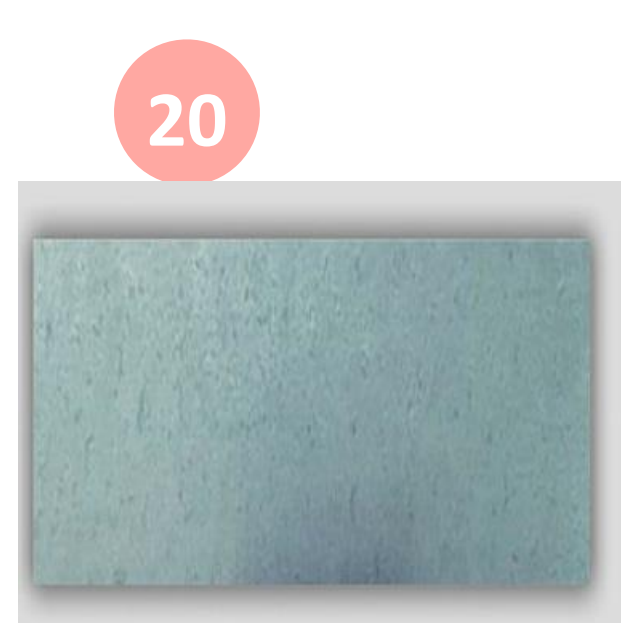
17 Furring Channel



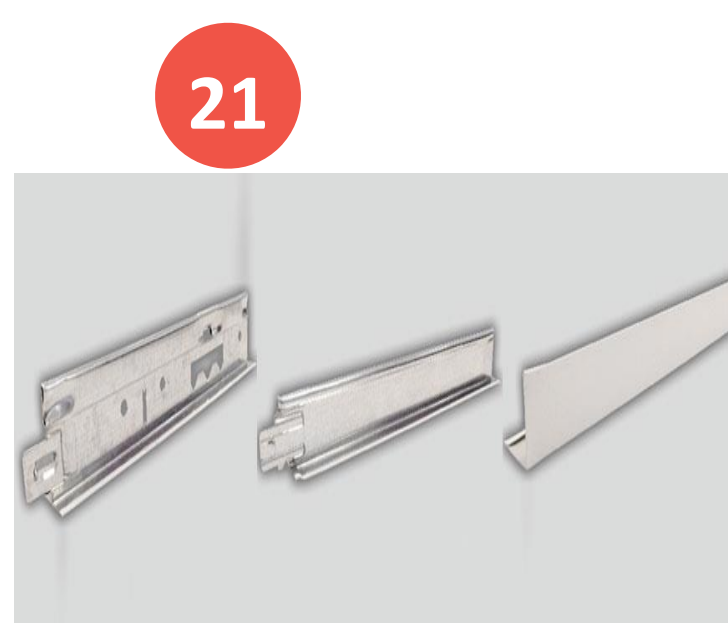
18 Furring Channel Track



19 Main Channel



20 Flat Strap



21 T24 T-Grid Suspension System

Our Accessories & Access panel Products



01

Finishing components



02

Sealant



03

Insulation



04

Jointing tape



05

Joint filler



06

Fixing components



07

Access panels

Gypsemna Quality Certificates

We are committed to providing quality product solutions to the building material industry and to retain customer satisfaction and therefore has ensured to include "Quality" as the main focus for all spheres of its activities.



Quality
Management

Exova
Certification

UL
Certification

Thomas
Bell-Wright

Gypsemna Quality Approvals

Authority Approvals



Dubai Civil
Defense



Abu Dhabi Civil
Defense



Jordan Civil
Defense



Oman Royal
Police



Bahrain Civil
Defense



Dubai
Municipality

Our Services



-System Engineering
-Set of knowledge and experience sharing



-On Site Training
-Enhanced safety on site



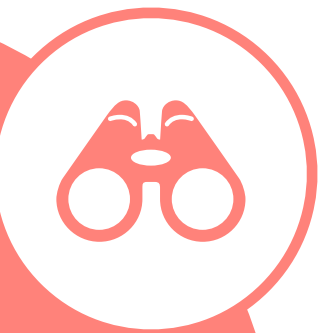
-On Site Inspection



-System Certification
-Update with latest construction techniques and trends



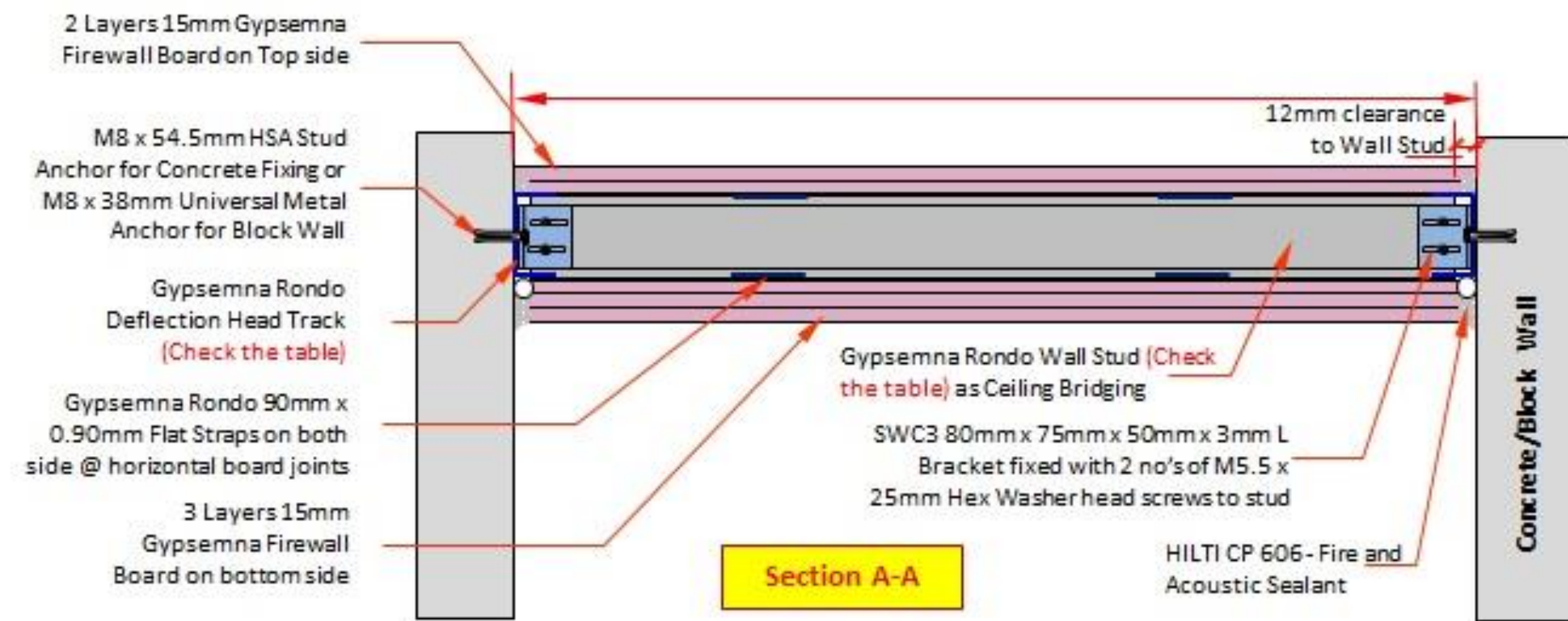
-Gypsemna Academy
-To Avoid Typical Errors



Special Ceiling Systems

We in Gypsemna THE ONE AND ONLY provider for the special ceiling systems like :

- Catwalk ceiling system
- Curve ceiling system
- 2 Hour fire-rated system
- 1 Hour key lock system



2 Hours fire-rated System



Curve ceiling system



Our Major Projects

MIDFIELD TERMINAL ABU DHABI



01



Owner

Master Developer

Design Consultant

Consultant of record



Our Major Projects

AL MAKTOUM AIRPORT DUBAI



02



Owner

Main Contractor

Design Consultant



دبي
لمشروعات
الطيران
الهندسية

DUBAI
AVIATION
ENGINEERING
PROJECTS



dar al-handasah
shair and partners



Our Major Projects

BVLGARI DUBAI



03



Client

Main contractor

Consultant

Sub-contractor



Our Major Projects

BLUE WATER DUBAI



04



Our Major Projects

VIDA RESIDENCE DUBAI



05



Owner

Architects & Engineers



Our Major Projects

CLEVELAND CLINIC ABU DHABI



06



Client

Architect

Consultant



كليفلاند كلينك أبوظبي
Cleveland Clinic Abu Dhabi

HKS



Our Major Projects

REEL CINEMA (Jabal Ali- Al Ghurair Center -Spring Village-
Dubai Mall-JBR)



07



Client



Our Major Projects



08



ADNOC HQ **ABU DHABI**



SIEMENS HQ **ABU DHABI**

Why Gypsemna?

01 The only local system provider attested by UAE authorities & comply with the global standard as well .

02 With collaboration with our strategic partners , Gypsemna can provide complete drywall system

03 Competitive price .

04 Materials Availability through all Key Distributors in UAE.

05 Centralized location can provide the flexibility in logistics.



06 Gypsemna is presenting in the most leading conferences : The Big 5conference - Cinema conference- Civil defense conference

07 Gypsemna technical manual .

08 One Stop Shop.

09 Pre-engineered systems to fit all project conditions and specification with full technical support .

10 Gypsemna Academy & Certification System .