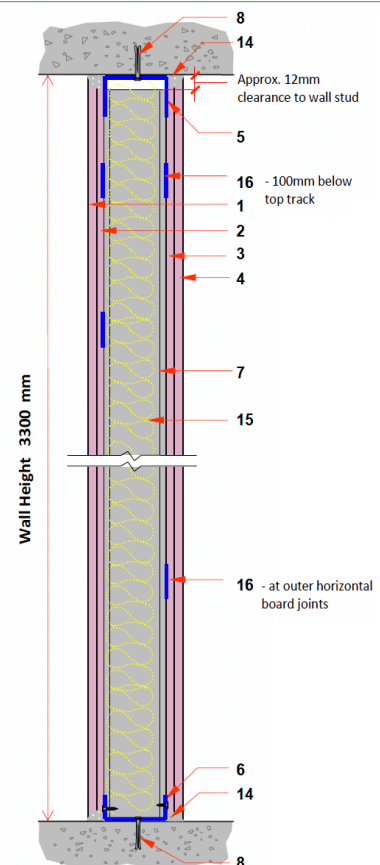
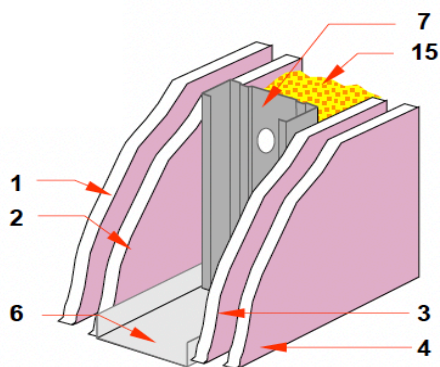


# 3.2 Partition Double Layer

G2FW125-A1a

«Wall Partition – 2 x 12.5 FW on both sides of a 50 UC Frame»

SYSTEM COMPONENTS		DETAILS
1	12.5 mm Gypsemna Firewall Board	2nd Layer Board on Left Side
2	12.5 mm Gypsemna Firewall Board	1st Layer Board on Left Side
3	12.5 mm Gypsemna Firewall Board	1st Layer Board on Right Side
4	12.5 mm Gypsemna Firewall Board	2nd Layer Board on Right Side
5	Gyp 52 mm x 50 mm x 0.60 mm Deflection Head Track	As Top Track
6	Gyp 52 mm x 0.50 mm Wall Track	As Bottom Track
7	Gyp 50 mm x 0.50 mm Wall Stud - 3.0 m	600 mm spacing
8	Wedge Anchor - 6 x 40 mm	600 mm centers
9	Wafer head Screw M4.2 x 13 mm	Metal to Metal Fixing
10	Self-Tapping Screw M3.5 x 25 mm	For 1st Layer Board Fixing
11	Self-Tapping Screw M3.5 x 45 mm	For 2nd Layer Board Fixing
12	Jointing Tape - Fibre	For Joint Finishing
13	JC100 - Jointing Compound	For Joint Finishing
14	Fire and Acoustic Sealant Sausage - CP 606	
15	Gypsemna Audio Insul 50 mm thick - 16 kg/m <sup>3</sup>	
16	Gyp Flat Strap - 50 mm x 0.50 mm thick	



Note:

1. For a fire-rated system, install flat strap at outer horizontal board joints and 100 mm below top track.
2. Filling the void with acoustic insulation will enhance acoustic performance of the partition.
3. Sealing the perimeter with fire and acoustic sealant provides the necessary air-tightness for acoustic and fire protection.

[www.gypsemna.com](http://www.gypsemna.com)