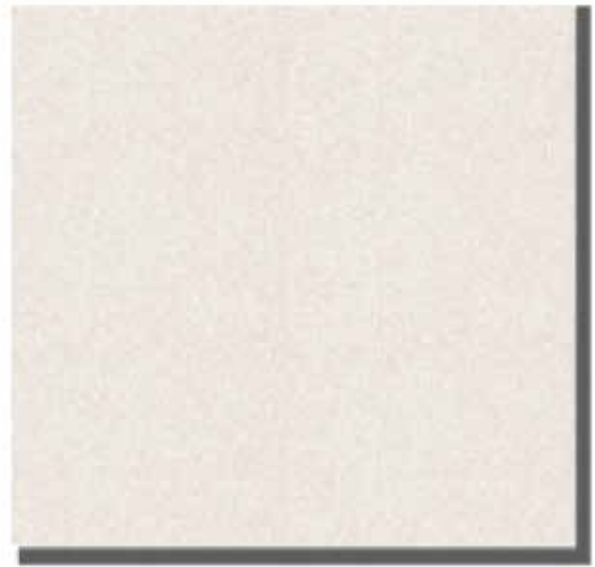




# GYPSEMNA

## GYPSEMNA CEILING TILES

**GYPSUM TILES**  
09 2900/GC



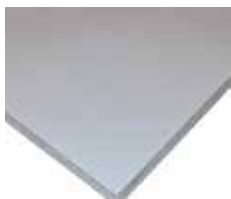
### ■ DESCRIPTION

Gypsemna Gypsum Ceiling Tile is a gypsum board with a white PVC laminated face and a PET (Polyethylene Terephthalane) metallic foil on the reverse side. The PET metallic foil is commonly referred to as a Polyester film. Its gypsum core offers non combustibility and mechanical stability to the tile. The white PVC face offers an aesthetic finish and its surface can be brushed and/or cleaned with a mild detergent and damp cloth.

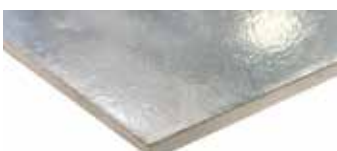
### ■ BASIC USES

Gypsemna Gypsum Ceiling Tile is the ideal product to use with our Gypsemna T24 T-Grid Suspension System, providing quick and easy access to any part of the false ceiling. Its advantages are; easy to clean, attractive and aesthetic surface finish, lightweight and simple installation. It is suitable for most common areas (dry & wet) such as toilets, bathrooms, kitchens, corridors and service area. Suitable for a multitude of sectors such as residential, commercial, healthcare, airports, cinemas and educational projects.

FACE SIDE



REVERSE SIDE



### ■ TECHNICAL DATA

#### PHYSICAL PROPERTIES

Nominal thickness  
Nominal width  
Standard length  
Nominal weight  
Edges

7, 9 and 12mm  
595mm  
1190mm  
5, 6.41 and 8.90kg/m<sup>2</sup>  
SE

#### FIRE PERFORMANCE

Core type  
Combustibility  
Surface burning characteristics  
Flame spread  
Smoke development

Type C  
Non combustible core  
Class A  
0  
15

#### STANDARDS AND REFERENCES

ASTM C1396

EN 520 - Type A

Product standard compliance

Standard for performance of gypsum plasterboards