



GYPSEMNA

**EYE HOLE
ANCHOR**

**GRID CEILING
SYSTEM**

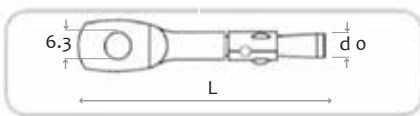


DESCRIPTION

The suspension Anchor features a body diameter matches the hole diameter, providing maximum shear capacity for the given hole size. Its cold-forged construction ensures superior strength and reliability. The anchor is designed to achieve maximum expansion of the sleeve. This action is further assisted by the application of load - making it ideal for suspension applications. The gripping lugs on the expansion sleeve engage the sides of the hole ensuring full expansion during setting.

SIZE

Diameter	d = 6.0mm
Drill hole diameter	do = 6.0mm
Length	L = 60mm



NOTE

1. Values represent the maximum recommended working load in tension.
2. Tension loads are provided for static load conditions only.
3. A minimum hole depth of 50mm is required.
4. The Suspension anchors only to be used for gravitational tensile applications.

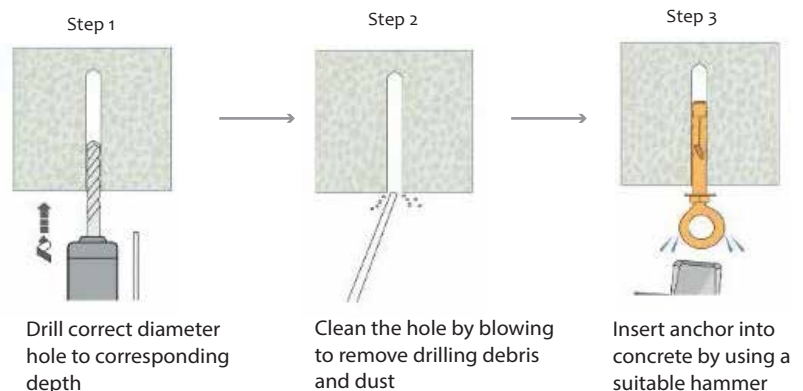
TECHNICAL DATA

Recommended load in tension	1.88KN
Recommended bending resistance	2.0Nmm
Concrete grade	C20/C25
Coating	Zinc coating (3-5 microns)

INSTALLATION GUIDE

1. Drill a 6 mm diameter hole, to the recommended depth, into the concrete soffit. Remove debris using a hand pump, compressed air, or vacuum.
2. Insert the anchor into the hole and tap with a hammer until it cannot go further.
3. Using the claw of a hammer, pull down on the head of the anchor until set.

Drill hole diameter, do = 6.0mm
 Minimum Drill hole depth, ho = 50mm
 Effective embedment, hef= 45mm
 Minimum edge distance = 50mm
 Minimum concrete thickness = 100mm



GYP-EHA-R3