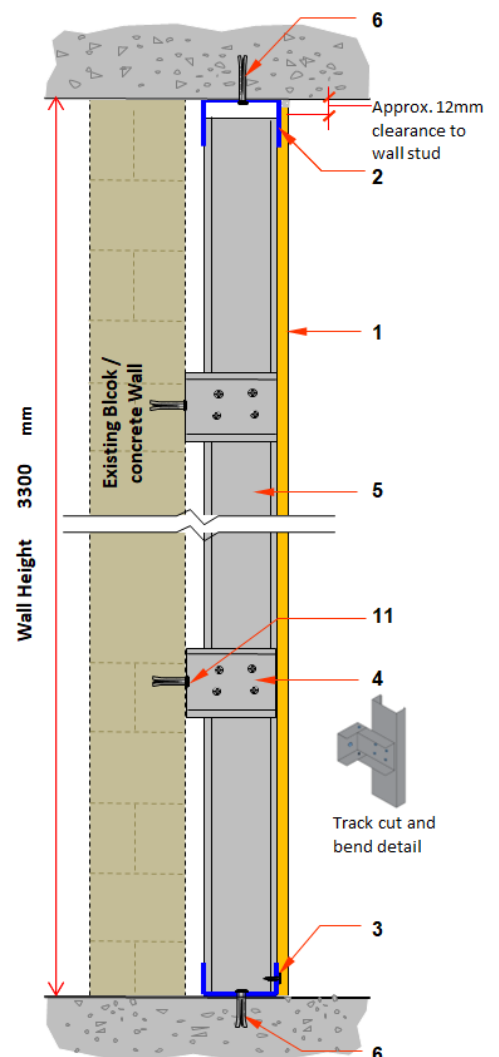
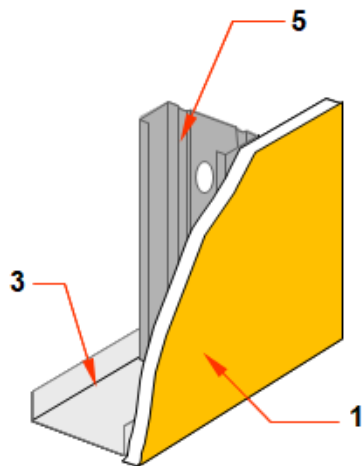


3.5 Wall Lining

GBL1RG125-A1a

«Braced Wall Liner – 1 x 12.5 TF on one side of a 50 UC Frame»

SYSTEM COMPONENTS		DETAILS
1	12.5 mm Gypsemna Tuff Board	Single Layer board on RS
2	Gyp 52 mm x 50 mm x 0.60 mm Deflection Head Track	As Top Track
3	Gyp 52 mm x 0.50 mm Wall Track	As Bottom Track
4	Gyp 52 mm x 0.50 mm Wall Track	1000 mm BRACING
5	Gyp 50 mm x 0.50 mm Wall Stud - 3.0m	spaced at 600 mm centers
6	Wedge Anchor - 6 x 40 mm	spaced at 600 mm centers
7	Wafer head screw M4.2 x13 mm	Metal to Metal
8	Self-Tapping Screw M3.5 x 25 mm	For Board Fixing
9	Jointing Tape - Fibre	For Joint Finishing
10	JC100 - Jointing Compound	For Joint Finishing
11	Shield Anchor M6 x 45 mm x 50 mm	For Existing Wall



Note:

1. For a fire-rated system, install flat strap at outer horizontal board joints and 100 mm below top track.
2. Filling the void with acoustic insulation will enhance acoustic performance of the partition.
3. Sealing the perimeter with fire and acoustic sealant provides the necessary air-tightness for acoustic and fire protection.

www.gypsemna.com