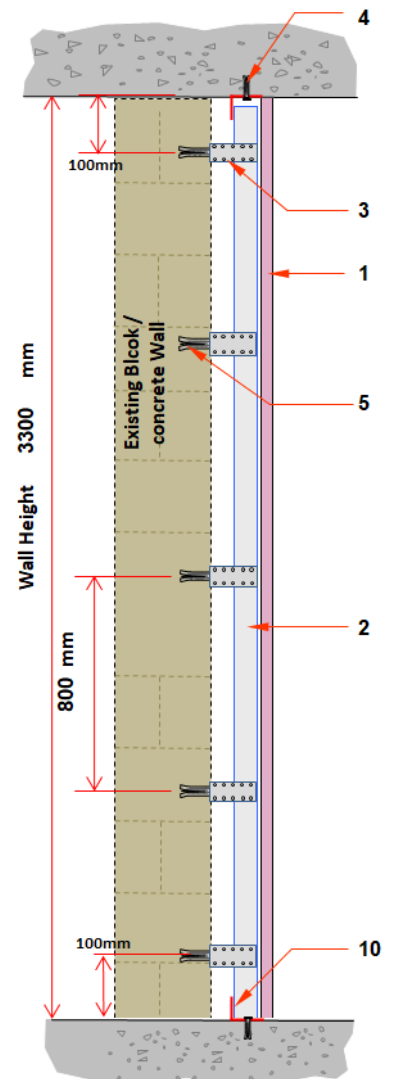
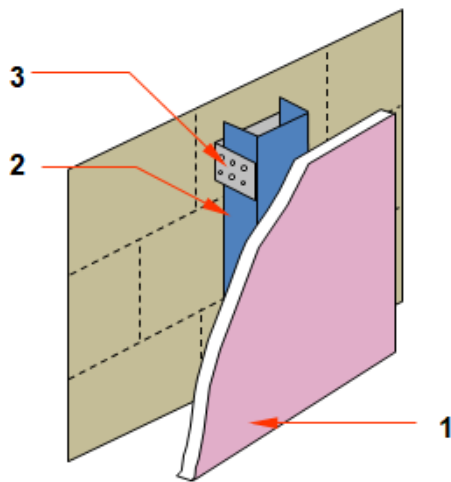


3.4 Wall Cladding

GMCC1RG-125A1a

«Wall Cladding – 1 x 12.5 FW on one side of a MC Frame»

SYSTEM COMPONENTS		DETAILS
1	12.5 mm Gypsemna Firewall Board	Board on Right Side
2	Main Channel 38 x 12 x 12, 0.50 mm	<i>spaced at</i> 600 mm centers
3	Wall Liner U Bracket 85 mm	<i>spaced at</i> 800 mm centers
4	Wedge Anchor - 6 x 40 mm	<i>spaced at</i> 600 mm centers
5	Shield Anchor M6 x 45 mm x 50mm	Block Wall Fixing
6	Wafer head Screw M4.2 x 13 mm	Metal to Metal Fixing
7	Self-Tapping Screw M3.5 x 25 mm	1st Board Fixing
8	Jointing Tape - Fibre	For Joint Finishing
9	JC 100 - Jointing Compound	For Joint Finishing
10	GI L-Angle 25 x 25, 0.50 mm	Top and Bottom



Note:

1. For a fire-rated system, install flat strap at outer horizontal board joints and 100 mm below top track.
2. Filling the void with acoustic insulation will enhance acoustic performance of the partition.
3. Sealing the perimeter with fire and acoustic sealant provides the necessary air-tightness for acoustic and fire protection.

www.gypsemna.com