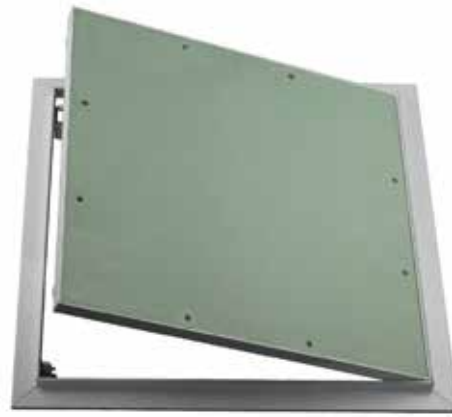




GYPSEMNA

MR BOARD

ACCESS PANEL
AP - 12.5mm MR



■ DESCRIPTION

Gypsemna access panels provide convenient access to services located behind gypsum board ceilings and partitions. The frames are manufactured from a stable aluminum profile, which is white powder coated (RAL 9016). Each access panel features a flush-fitted 12.5mm moisture-resistant board infill. The Access Panels are equipped with high quality concealed spring-loaded push-open and push-close mechanisms and a 1.5mm laminated G.I wire with an eyelet hook for partial or full opening of access panel door. Gypsemna access panels are non-fire rated.

■ BASIC USES

Gypsemna access panel with a moisture-resistant board is used in interior walls and ceilings for access to utilities and services.

■ TECHNICAL DATA

PHYSICAL PROPERTIES

Nominal thickness	15mm
Nominal width	300mm, 450mm, 600mm
Standard length	300mm, 450mm, 600mm
Nominal weight	13.0kg +/-0.20kg/m ²
Colour	Green
Custom sizes	Available on request

■ ADVANTAGES

- Consistently high quality.
- Uniformly flat, attractive appearance, with no visible shadows.
- High edge hardness.
- Uniform high-strength cores eliminate crumbling and cracking.

■ STANDARDS & REFERENCES

- Complies with ASTM C1396/C and ASTM C1396/M
- Complies with EN520, Types A and H1