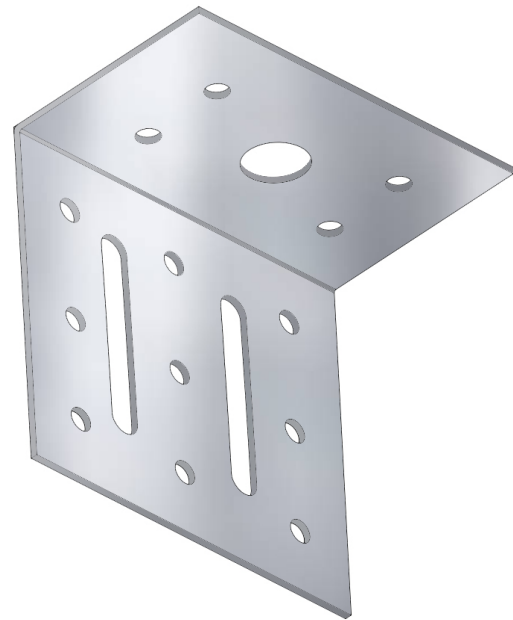




GYPSEMNA
SLOTTED WEB
CLEAT
FIXING COMPONENTS



■ **DESCRIPTION**

The Slotted Web Cleat is typically used to transfer loads in external wall situations where a deflection allowance is needed. It is required as the higher external wall pressures would cause a standard stud/track connection to be overloaded.

■ **BASIC USES**

The Slotted Web Cleat is applicable for Partition System.

■ **TECHNICAL DATA**

PHYSICAL PROPERTIES

Coating	Z180 Zinc-Aluminium Alloy
Standard Compliance	ASTM A653/A653M
Material	Galvanized Steel (GS)
Steel Grade	G2
Min. Yield Strength	270 MpaMin
Tensile Strength	330 Mpa

■ **PERFORMANCE DATA**

Part No.	LENGTH (mm)	WIDTH (mm)	HEIGHT (mm)	MASS (kg)
SWC3A	125	50	75	0.4200
SWC3	80	50	75	0.270

