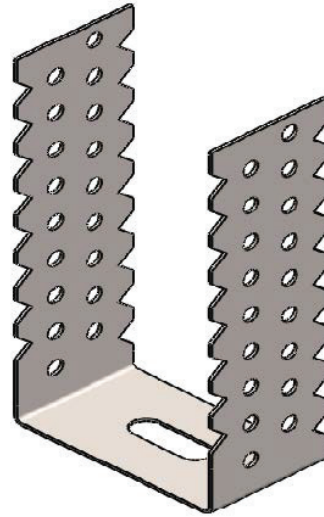




**GYPSEMNA
UNIVERSAL BRACKET**

FIXING COMPONENTS



DESCRIPTION

Gypsemna UNIVERSAL BRACKET is adjustable U-bracket used in wall lining / cladding systems. Cold roll-formed from hot-dipped galvanized steel.

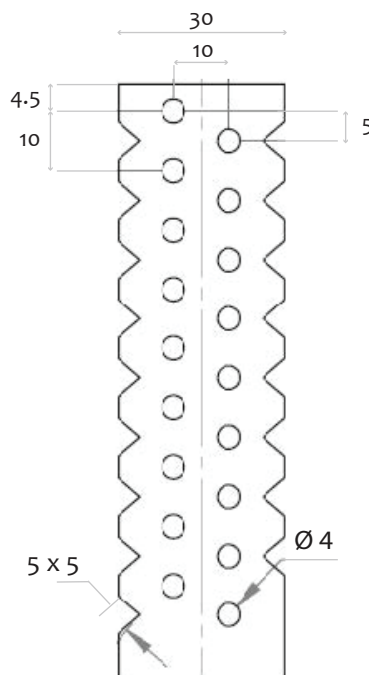
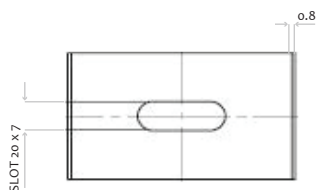
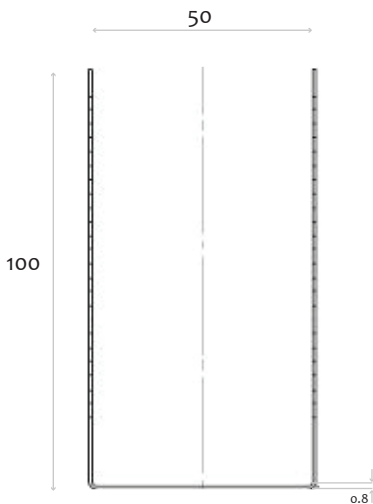
BASIC USES

Gypsemna UNIVERSAL BRACKET is applicable for wall lining system/ Cladding system. It is fixed on the wall with block/ concrete substrate. The total thickness of the wall is 25mm –75mm including the Gypsum board. It can be used as replacement to the DOT and DAP system.

TECHNICAL DATA

PHYSICAL PROPERTIES

Coating	Zinc coating
Standard Compliance	ASTM C645 / ASTM A653
Material	Cold roll-formed from hot-dipped galvanized steel
Thickness	0.80 mm



Universal U - Bracket

