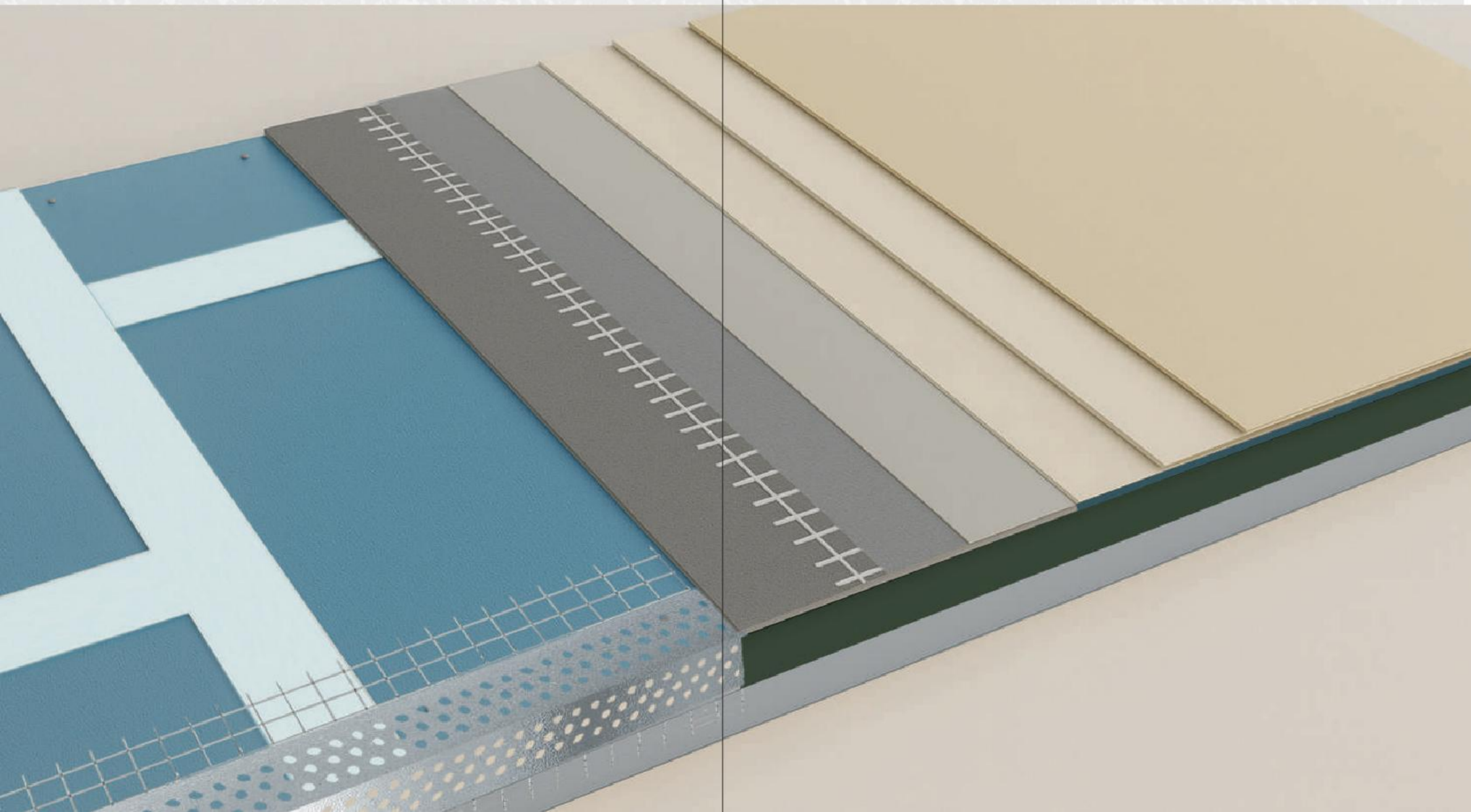




**GYPS EMNA**

**IVO**  
**FACADE**

**WALL**  
**SYSTEM**



# SMART SOLUTIONS IN GYPSUM INNOVATION

Gypsemna, a regional leader, delivers high performance gypsum solutions built for modern construction demands. Our versatile range supports complex commercial and industrial projects. At the core is our flagship Glass Mat product, engineered for strength, fire and moisture resistance, and speed of installation, setting a new standard in durability and performance.

## OUR PRODUCT RANGE INCLUDES

1. Standard Boards for general use
2. Moisture Resistant for humid environments
3. Fire Resistant for safety applications
4. Impact Resistant for high-traffic areas
5. Acoustic Boards for sound insulation

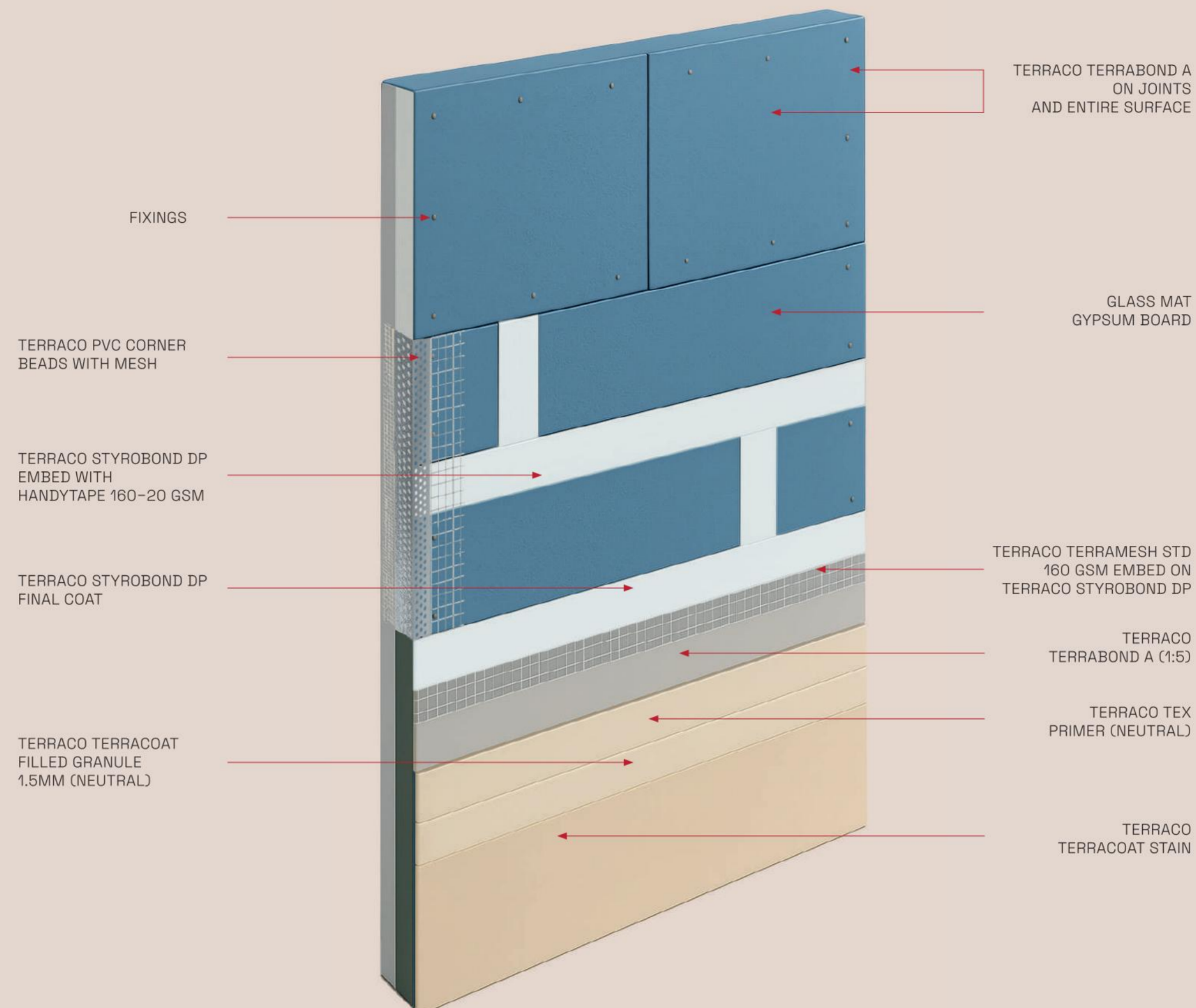
## APPLICATIONS OF IVO FACADE

- External Facade Cladding
- Slab Soffits
- Modular Units
- External Wall System

## ADVANTAGES OF IVO FACADE

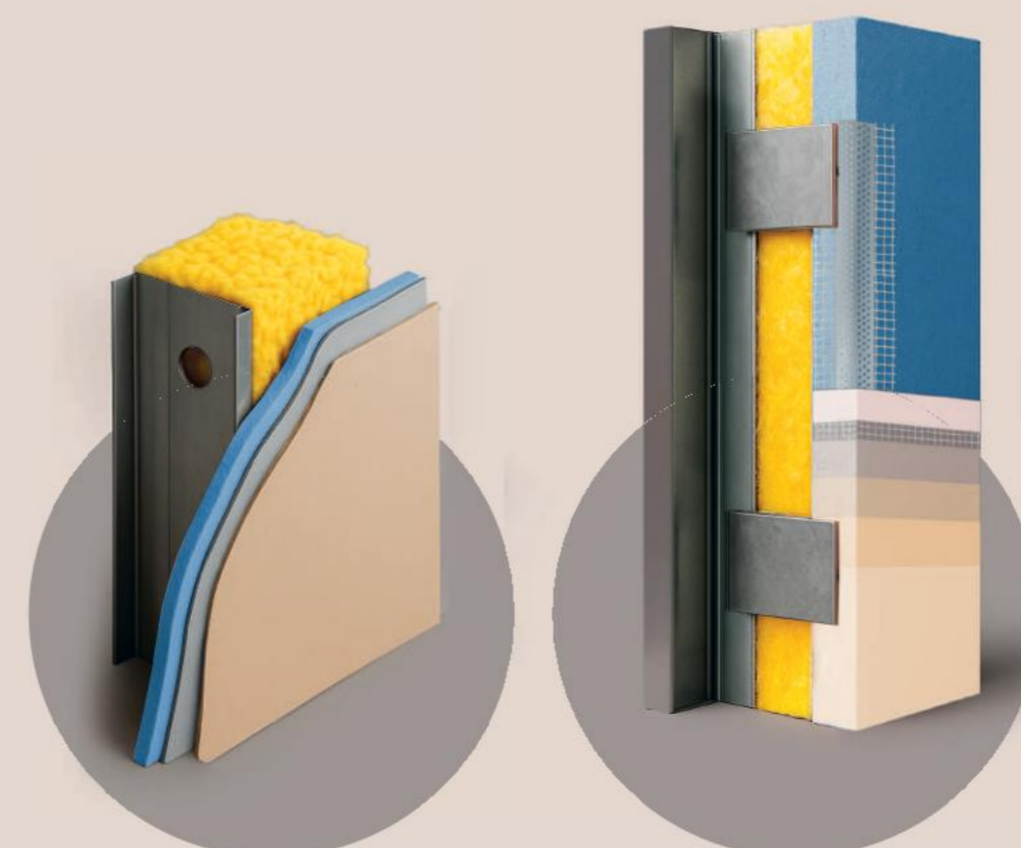
- Lightweight Structure
- Durable Finish
- Fast Installation
- Thermal Efficiency
- Fire Rated
- Design Flexibility

## CERTIFICATIONS



## THE IVO WALL FACADE SYSTEM

The IVO Wall Facade System from Gypsemna is an innovative exterior wall solution designed for superior thermal insulation, durability, and seamless architectural integration.



# FINISHES THAT DEFINE YOUR VISION

The IVO Façade system is engineered for creative flexibility, allowing a wide range of surface finishes to suit architectural aesthetics while maintaining superior durability and performance.

## AVAILABLE FINISHES INCLUDE

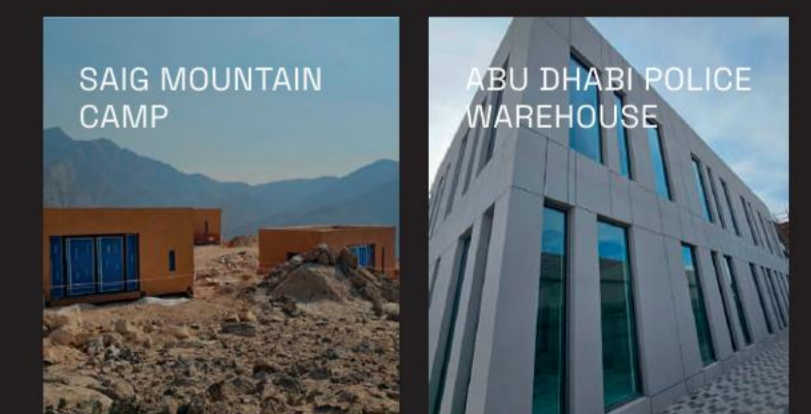


Textured Coatings    Acrylic Renders    Paintable Surfaces



Stone-Look Finishes    Smooth Plaster    Decorative Panels

## KEY PROJECTS



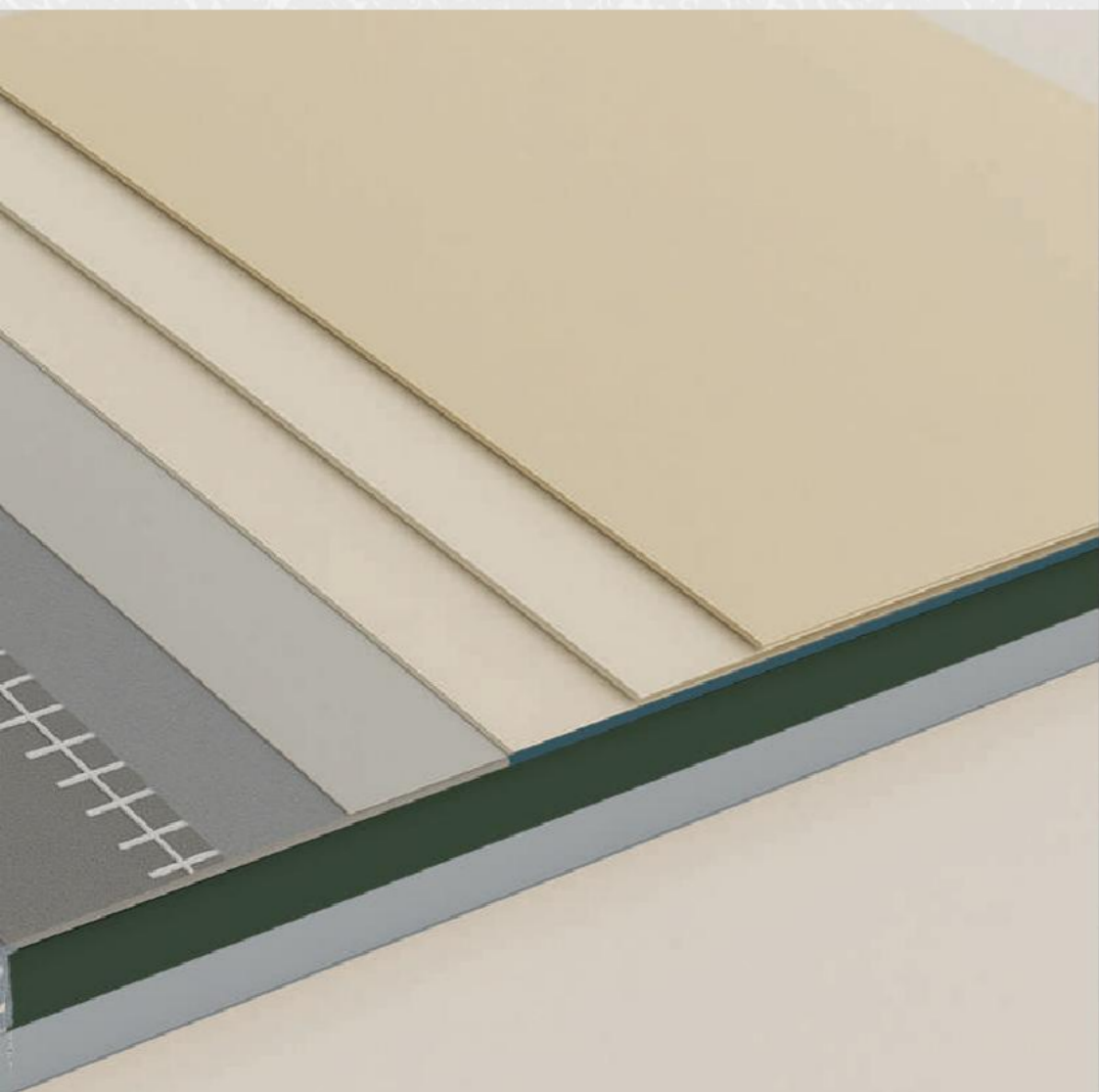
Scan the QR code to view our latest projects





**EMNA**

# **WALL SYSTEM**



[gypsemna.com](http://gypsemna.com)



**GYPSEMNA**

[info@gypsemna.com](mailto:info@gypsemna.com)



**GYPS**

# **IVO FACADE**

